

ITEM 46. CAR SHARE – MERTON STREET ZETLAND

TRIM RECORD NO: 2017/390875

RECOMMENDATION

It is recommended that the Committee endorse the allocation of parking on the southern side of Merton Street, Zetland between the points 15.5 metres and 19.5 metres (one car space) east of Elizabeth Street, as 'No Parking Car Share Vehicles Excepted' subject to the following:

- (A) The City will only install signage for the car share space when GoGet has a car to occupy the space.

<i>Voting Members</i>	<i>Support</i>	<i>Object</i>
City of Sydney		
Roads and Maritime Services		
NSW Police – Redfern LAC		
Representative for the Member for Heffron		

DECISION

BACKGROUND

The City is committed to providing dedicated parking for car sharing across the Local Government Area as part of a Council approved Car Share Policy. A submission has been received from GoGet for a car share space in Merton Street, Zetland, east of Elizabeth Street.

COMMENTS

The kerb space on the southern side of Merton Street east of Elizabeth Street, adjacent to an existing car share space, is currently unrestricted for parking. The proposal will extend the existing car share bay to form a double pod.

The car share space will be installed and managed in accordance with the Roads and Maritime Service's Technical Direction 2007/04 and the provisions of the Council-approved Car Share Policy.

Car sharing is popular in more than 600 cities worldwide, and research has shown substantial environmental benefits. Car sharing reduces total urban driving, reduces household vehicle holdings, and increases walking, cycling and public transport use.

On average, each car share vehicle in the City can replace up to 12 private vehicles that would otherwise compete for parking.

As of August 2017, there are currently 63 GoGet car share members and six spaces allocated for car share vehicles within a 250 metre radius of this location.

CONSULTATION

The City consulted local residents and businesses in the area. There were 63 letters sent out with no responses supporting the proposal and two responses opposing the proposal.

The responses opposing the proposal are due to the loss of parking and that the number of spaces already dedicated to car sharing in the local area is sufficient. One resident suggested Tilford Street as an alternative location for the proposed bay.

However the existing car share spaces nearby have consistently high turnover usage and membership numbers in the surrounding area necessitate further capacity.

The proposed bay is close and convenient to residents in the area and relocating the space to Tilford Street would position the bay away from the members who would ultimately use the space.

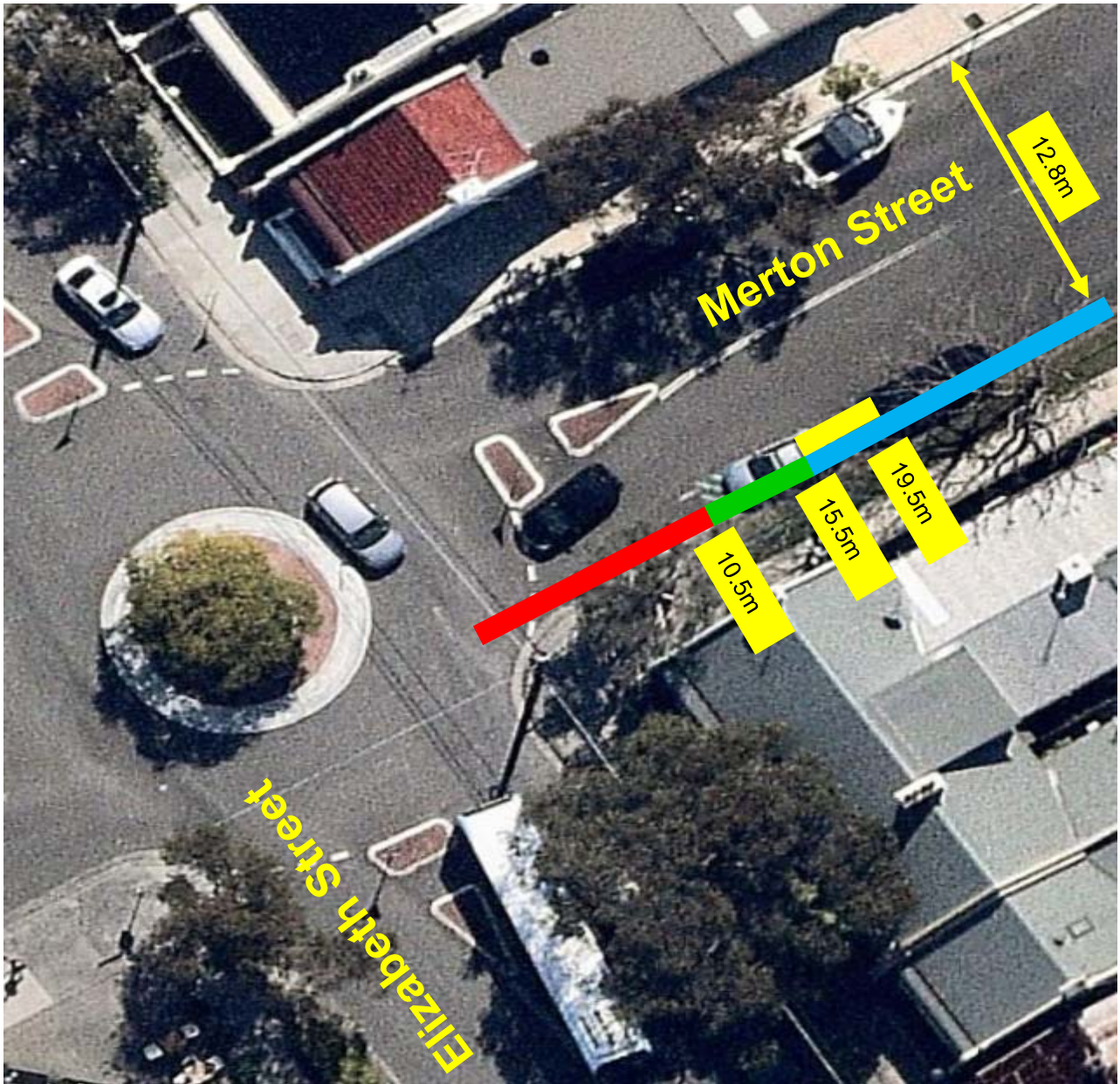
FINANCIAL

Funds are available in the current budget.

ATTACHMENTS

Car Share – Merton Street Zetland

Manbir Singh, Traffic Engineer



LEGEND

- "No Stopping" (Existing)
- Unrestricted Parking (Existing)
- "No Parking Authorised Car Share Vehicles Excepted" (Existing)
- "No Parking Authorised Car Share Vehicles Excepted" (Proposed)



PROPOSAL

**PROPOSED CAR SHARE SPACE
MERTON STREET EAST OF ELIZABETH STREET
ZETLAND**



